



New Zealand



Manifesto

The art of hospitality knows no bounds —
it extends beyond walls, to spark inspired experiences everywhere.

We dare to reimagine hospitality not as a place or service,
but infinite connected moments,
whether you want to live, work, or play.

We are shaping a future where travel unlocks a life lived limitless.
Where powerful brands deliver exceptional experiences and value,
and talent and passion deliver a welcoming human touch.

Where innovation constantly expands boundaries,
and a commitment to sustainability gives back
to one planet, many communities.

Because the future belongs to those who design it,
and we're here to bring you there — first.





Accor is the world's leading augmented hospitality group offering unique and meaningful experiences a market leader in Europe, Latin America, Middle East & Africa and Asia Pacific. We operate over 2,520 hotels under direct management contract and an additional 2,260 hotels under franchise contract.

Every night, we welcome 630,000 guests in more than 112 destinations. With an unrivalled portfolio of brands from luxury to economy, Accor has been providing hospitality savoir-faire for more than 50 years.

In New Zealand, Accor's collection of 44 hotels under 15 brands in 10 stunning locations, covers all the major corporate and leisure travel destinations.





Live

Luxury

Premium

Midscale

Economy

RAFFLES

SLS

mantis

ANGSANA

mantra

BreakFree

ORIENT  EXPRESS

SO



25h
twenty five hours hotels

NOVOTEL

ibis

BANYAN TREE

S O F I T E L

HYDE

Mercure

ibis
STYLES

DELANO

THE HOUSE OF
ORIGINALS



MÖVENPICK

adagio

ibis
budget

SOFITEL
LEGEND

RIXOS

Art Series

GRAND MERCURE

MAMA
SHELTER

JO&
JOE

Fairmont

onefinestay

MONDRIAN

PEPPERS

TRIBE

hotelF1

pullman

THE
SEBEL

swissôtel

Auckland

Known as the '*City of Sails*', there are few places quite like Auckland. New Zealand's largest city ranks amongst the best in the world, home to 1.4 million people, Auckland has something for every visitor. Enjoy designer shopping, inspired restaurants, colourful art galleries and trendy clubs and bars, visit SkyCity Casino and the Sky Tower, or soak up the colourful waterfront atmosphere of Auckland's iconic Viaduct Harbour.



14 hotels \ 10 brands

SO \ SOFTEL \ MGALLERY \ PULLMAN \ MÖVENPICK \ THE SEBEL \ NOVOTEL \ MERCURE \ IBIS \ IBIS BUDGET

Auckland



SO/ Auckland

67 Customs Street East, Auckland

- Located in the heart of the urban design quarter with uninterrupted views across the Waitemata Harbour
- 130 guest rooms and suites
- 3 Restaurants & bars including a rooftop bar
- Complimentary Wi-Fi
- Complimentary mini bar including non-alcoholic beverages
- 24-hour solution centre
- Valet parking & limo fleet
- 24-hour in-room dining
- SoFit and SoSpa, indoor pool

SO/

Auckland



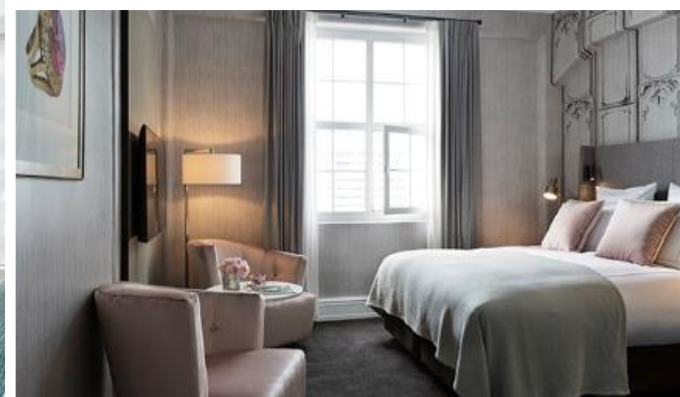
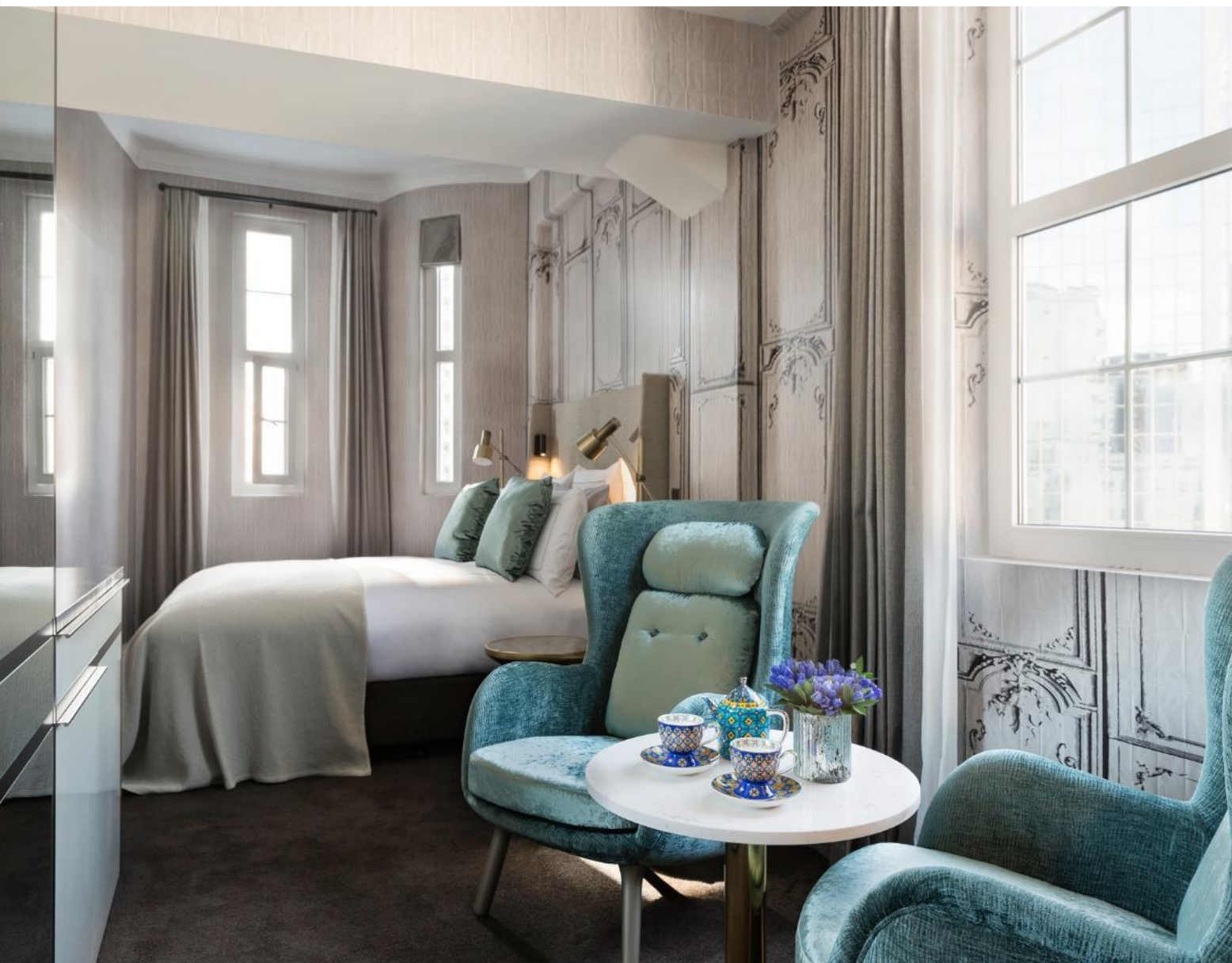
Sofitel Auckland Viaduct Harbour

21 Viaduct Harbour Avenue, Auckland

- Located in the heart of Auckland, a unique maritime experience between vibrant Viaduct Harbour and the bustling Wynyard Quarter
- 91 rooms including 7 junior, 2 deluxe and the Opera Suite
- Panoramic views of Waitemata Harbour
- All rooms boast rain showers, deep soaking bathtubs, along with Juliet balconies
- All luxury appointed bedrooms and suites feature private balconies
- Sofitel SPA and Sofitel FITNESS, including indoor heated pool, saunas, and jacuzzi are available for all inhouse guests
- Group dining and meeting rooms for up to 100 people.

SOFITEL
HOTELS & RESORTS

Auckland



Fable Auckland, MGallery 58-60 Queen Street, Auckland

- Built in 1928, this beautifully appointed hotel is situated in the heart of Auckland's Queen Street, the city's most vibrant and dynamic precinct offering a wide range of chic hospitality, world-class entertainment and luxury retail
- Cooke's Restaurant & Bar offers carefully crafted dishes designed with sharing in mind
- 79 rooms and suites have a refined elegance and art deco glamour
- Sofitel My Bed™, 48" Samsung Smart TV powered by a state-of-the-art Bose speaker



Auckland



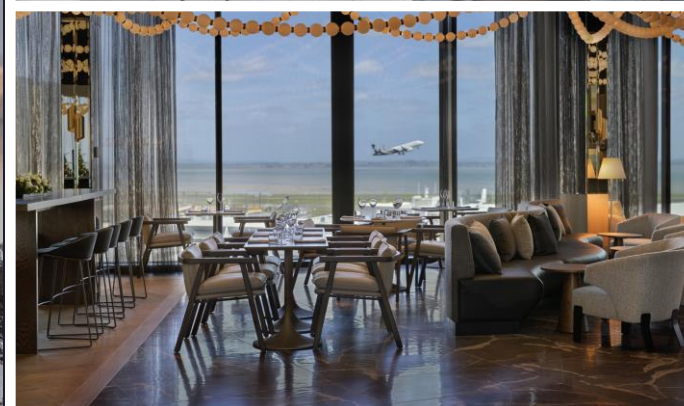
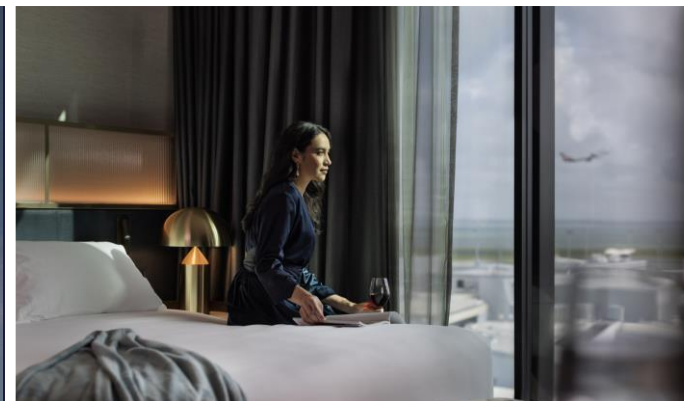
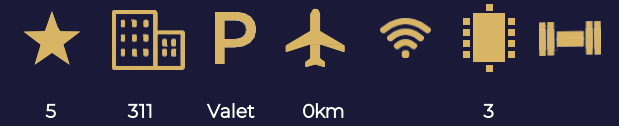
Pullman Auckland

Cnr. Waterloo Quadrant & Princes Street,
Auckland

- One of Auckland's largest 5-star hotels
- Located in the city centre, close to popular attractions and well known shopping and entertainment districts
- The hotel features 340 hotel rooms and residence apartments
- Executive club lounge, connectivity centre, Pullman Spa & Fit lounge and extensive dining and function facilities
- Complimentary Wi-Fi
- Tapestry Dining serves a decadent breakfast, lunch and dinner daily



Auckland



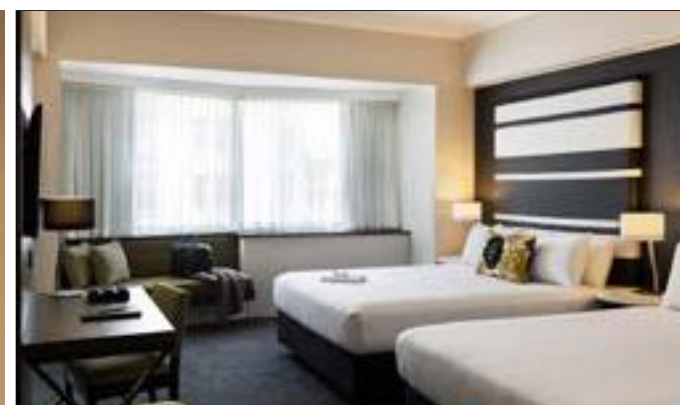
Pullman Auckland Airport

37 Tom Pearce Drive, Auckland Airport

- The only 5-star premium airport hotel in New Zealand
- Located 1 minutes' walk from Auckland International Terminal
- 30 minutes from the city centre
- 311 elegant rooms and suites
- Top floor premium restaurant with stunning views
- Day-use rooms available from 6am to 6pm
- Ultra modern fitness centre
- Fast free wifi building wide



Auckland



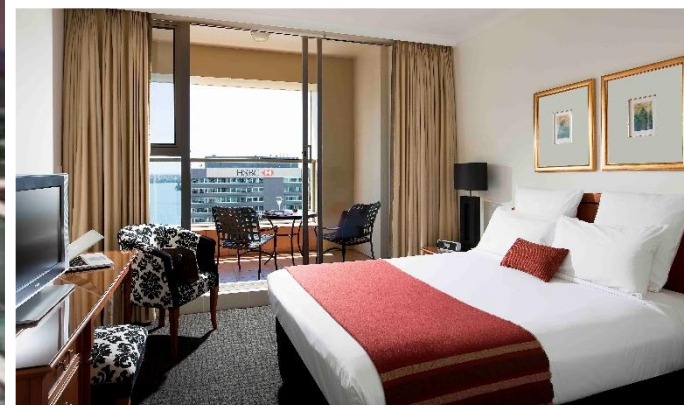
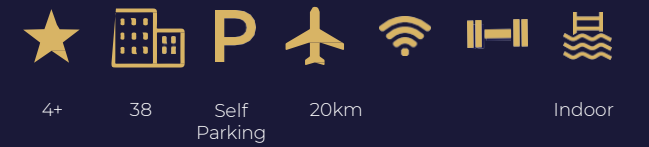
Mövenpick Auckland

8 Customs Street, Auckland

- Located in the Auckland waterfront district
- 207 guest rooms including 12 junior suites and 3 executive suites
- Executive suites offer a soak bath and rain shower
- Dedicated conference and event floor
- Lifestyle spaces including gym, interactive fitness room and library
- Custom Lane, top floor BODA restaurant & bar
- Complimentary Wi-Fi

MÖVENPICK
HOTELS & RESORTS

Auckland



The Sebel Quay West Auckland

8 Albert Street, Auckland

- 4.5 star apartment style hotel
- 300 metres from the harbour, in the heart of Auckland's central business district and downtown shopping precinct
- 1 and 2 bedroom apartments with kitchens, large balconies and majestic city and harbour views
- The hotel's UP Restaurant offers urban cafe dining
- Complimentary Wi-Fi, fitness centre and heated indoor pool and Jacuzzi



Auckland



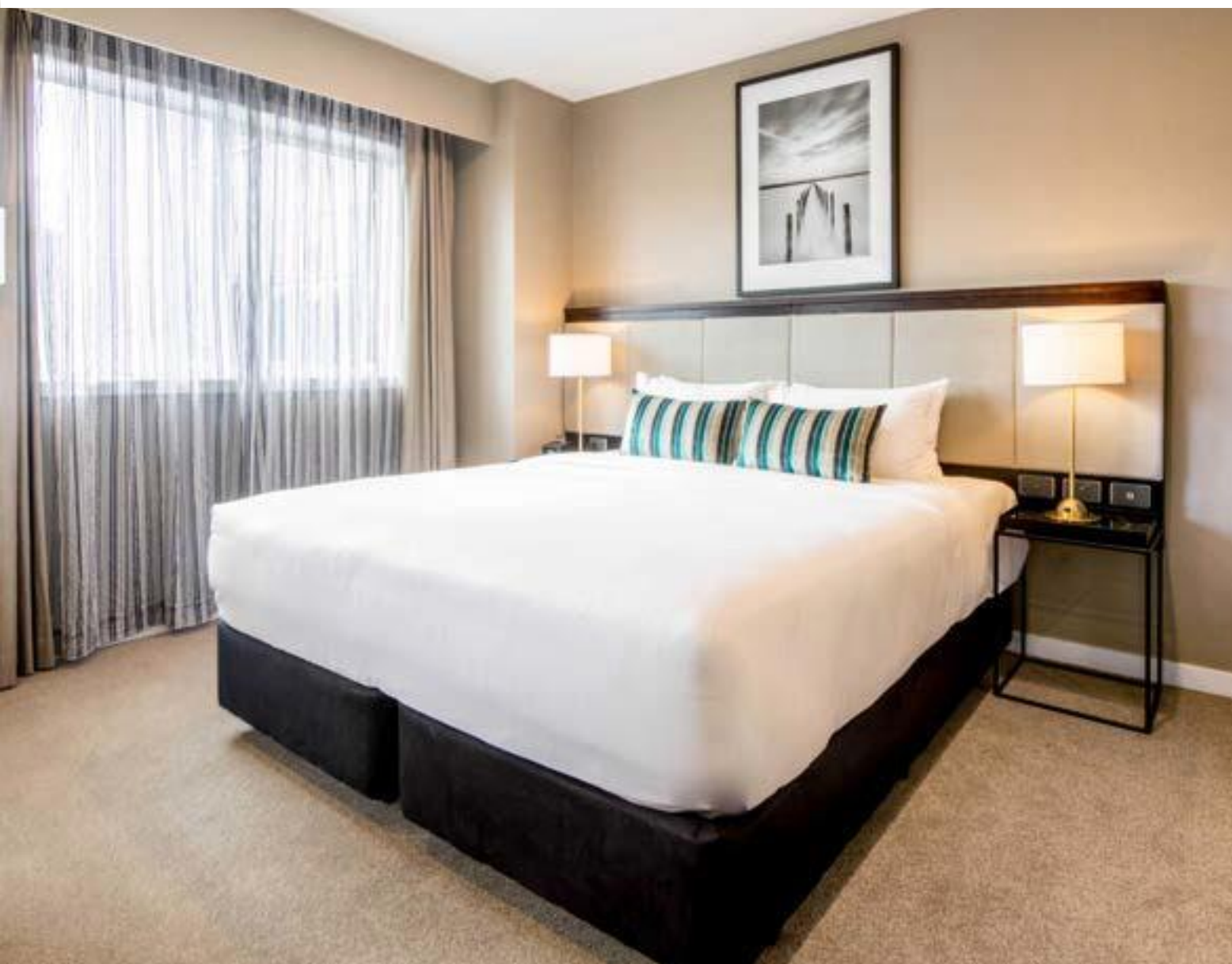
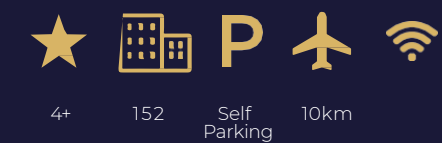
The Sebel Auckland Viaduct Harbour

85 - 89 Customs Street West, Auckland

- Located at the water's edge in the Viaduct Harbour and adjacent to Auckland's central business district
- Extensive views of the marina and the city
- Featuring spacious, stylishly appointed city view studios and one bedroom suites
- High-speed internet, private balconies, laundry facilities and fully equipped kitchens with refrigerators and mini bars
- Apartment style living combined with the convenience of 4.5 star hotel amenities



Auckland



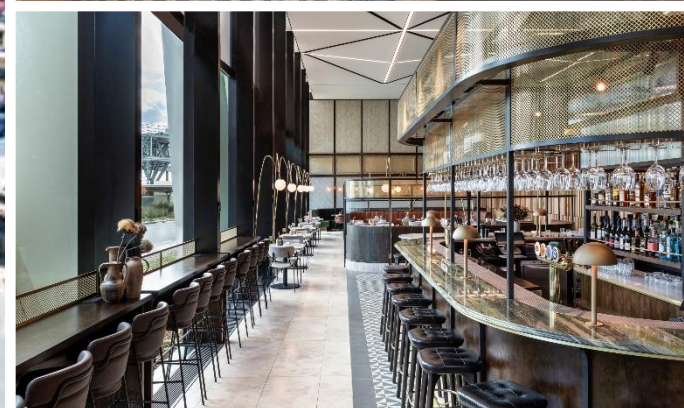
The Sebel Auckland Manukau

16 Lakewood Court, Manukau, Auckland

- Luxury apartment-style accommodation in heart of Manukau City
- Fully serviced guest rooms, studios and 1 bedroom apartments
- Featuring spacious, stylishly appointed city view studios and one bedroom suites
- Kitchenettes for self-catering in studios and apartments
- High-speed Internet and laundry services
- Hotel restaurant offering contemporary cuisine and full buffet breakfast
- Hotel bar, open daily



Auckland



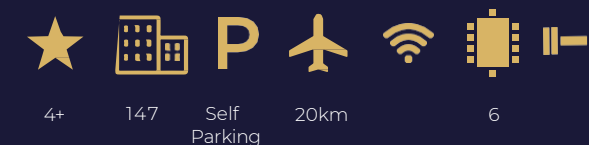
Novotel Auckland Airport

35 Tom Pearce Drive, Auckland Airport

- Located beside Auckland International Terminal
- 30 minutes from the city centre
- 263 elegant rooms and suites
- Day-use rooms available from 6am to 6pm
- Large work space, iPod® dock, LCD TV
- 24-hour drinks and dining at The Square
- Modern fitness centre to keep you in shape
- 2 floors of naturally-lit conference and boardrooms

NOVOTEL

Auckland



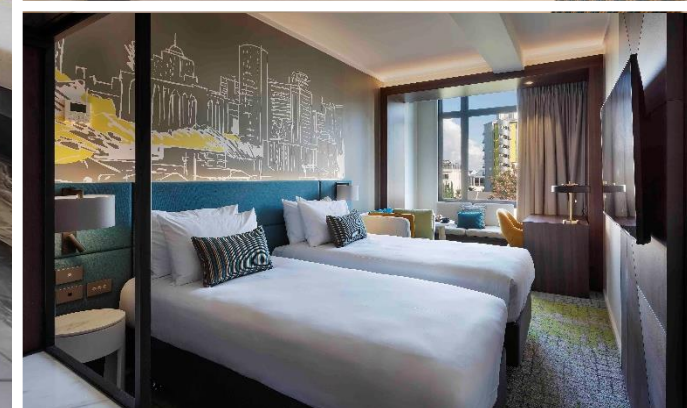
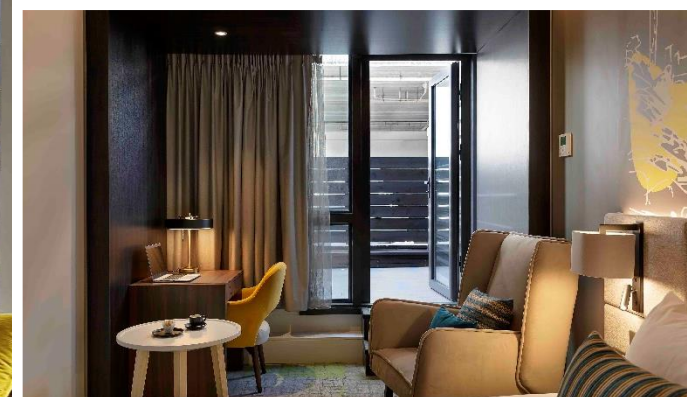
Novotel Auckland Ellerslie

72-112 Green Lane East, Auckland

- Close to ASB Showgrounds and Ellerslie Event Centre. Easy motorway access with onsite parking
- Just 20 minutes from Auckland Airport
- 15 minutes from the heart of downtown Auckland
- Generous hot and cold breakfast buffet
- Relaxed bistro and buffet dining at Acacia Restaurant
- Ergonomic work space and LCD TV in every room

NOVOTEL

Auckland



Mercure Auckland Queen Street

500 Queen Street, Auckland

- Located at the top of Queen Street, near Karangahape Rd
- 96 guest rooms
- Deluxe rooms feature balconies and bathrooms with rain shower
- Dedicated boardroom catering for up to 12
- 24 hour reception, fitness centre, limited onsite carparking
- Restaurant and bar, currently offering coffee and continental breakfast. All day dining and bar offering to come
- Complimentary Wi-Fi

MERCURE
HOTELS

Auckland



ibis Auckland Ellerslie

72-112 Green Lane East, Auckland

- Easy motorway access
- 15 minutes from Auckland's city centre
- 20 minutes from Auckland Airport
- Same complex as the adjoining 4.5 star Novotel Auckland Ellerslie, with shared facilities
- Acacia Restaurant and Garden Bar
- State-of-the-art conference rooms
- Fully equipped gymnasium



Auckland



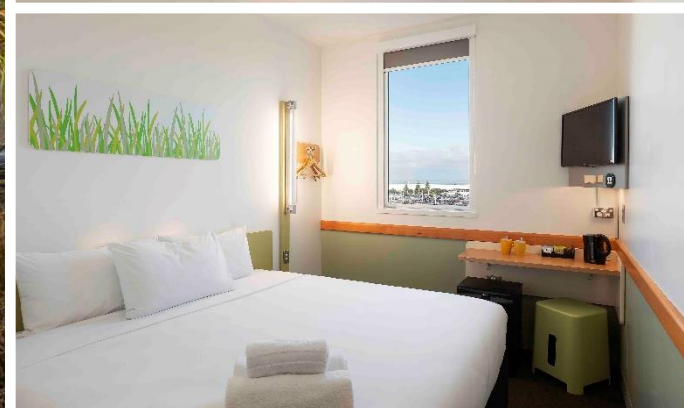
ibis budget Auckland Central

20 Wyndham Street, Auckland

- Located just off Queen Street
- SkyCity Entertainment and Casino and Viaduct Harbour is in walking distance
- 144 rooms feature balconies and some with kitchenette facilities



Auckland



ibis budget Auckland Airport

2 Leonard Isitt Drive, Auckland Airport

- Best value accommodation at Auckland Airport
- Ideal choice for transit guests
- Located within walking distance to both the Domestic and International Terminals.
- Complimentary on-site parking
- Airport shuttle available at an additional charge
- 198 contemporary rooms, vending machines, breakfast and internet access available.
- Adjacent to the hotel is a range of shops and outlets including a cafe, supermarket and casual dining options



Pauanui

Perched on the east coast of the stunning Coromandel Peninsula in the North Island, just an hour and a half by road from Auckland or Hamilton is Pauanui. A delightful seaside resort town. Sailing, surfing, fishing, golf, tennis – Pauanui accommodation is all about leisure and pleasure and the Grand Mercure hotel is a great choice for adventure, sightseeing and relaxation experiences during your stay, including nearby fishing and 18-hole golf course.



1 hotel \ 1 brand

GRAND MERCURE



Pauanui

★

4+

🏠

48

P

Self Parking

✈

120km

📶

🔋

3

♿

🏊

Outdoor



Grand Mercure Puka Park Resort

42 Mount Avenue, Pauanui Beach
Coromandel Pe ninsula

- Secluded hideaway located at Pauanui Beach
- Situated minutes from the long sandy beach and nestled into the slopes of Mt. Pauanui
- 48 romantic chalets surrounded by native bush
- Miha Restaurant offers an intimate ambience
- Outdoor swimming pool and spa, gym, tennis court and bikes for hire
- International 18-hole golf course and excellent fishing nearby



GRAND MERCURE

Hamilton

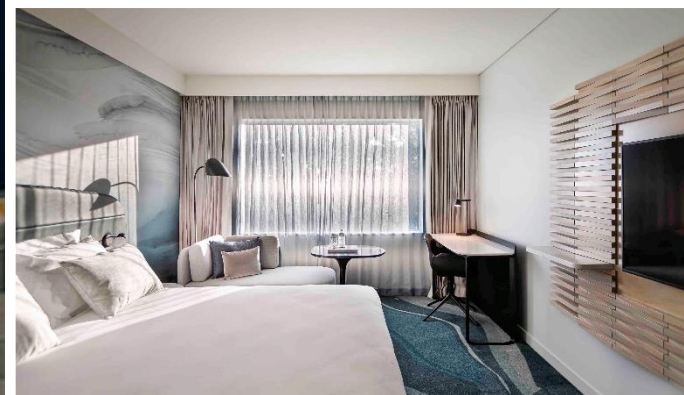
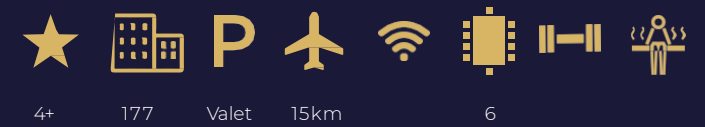
Hamilton is among New Zealand's largest metropolitan areas, and is the country's largest inland city. Explore the city's historic Southend, stroll through an abundance of boutique stores, and enjoy a bite at one of the trendy cafes or restaurants. Take in the amazing contemporary art, and learn all about the intriguing Maori culture at the Waikato Museum of Art and History. Try your luck at the glamorous SkyCity Casino, catch a game at Waikato Stadium – home of the Waikato Chiefs rugby team or visit the award-winning Hamilton Gardens.



2 hotels \ 2 brands

NOVOTEL \ IBIS

Hamilton



Novotel Tainui Hamilton

7 Alma Street, Hamilton

- Waikato's leading 4.5 star hotel on the banks of the Waikato River
- Located in the heart of the CBD
- 177 well equipped rooms
- Extensive conference facilities for up to 300 delegates
- On-site parking, gym, sauna and spa
- Restaurant and bar onsite, serving breakfast, lunch and dinner

NOVOTEL

Hamilton



ibis Tainui Hamilton

18 Alma Street, Hamilton

- On the banks of the Waikato River
- 126 well appointed rooms with city or river views
- Modern conference facilities
- Restaurant with balcony and views
- Minutes from Hamilton's Claudelands Events Centre and superbly located in the heart of the CBD
- Restaurant and bar onsite, serving breakfast, lunch and dinner



Rotorua

Located in the central North Island, Rotorua is one of the original tourist destinations in New Zealand. The heartland of New Zealand Maori culture, Rotorua invites tourists to experience the warm spirit of Te Maori. Whether it's adventure, rejuvenation, or a cultural experience you seek, Rotorua offers something special for everyone.

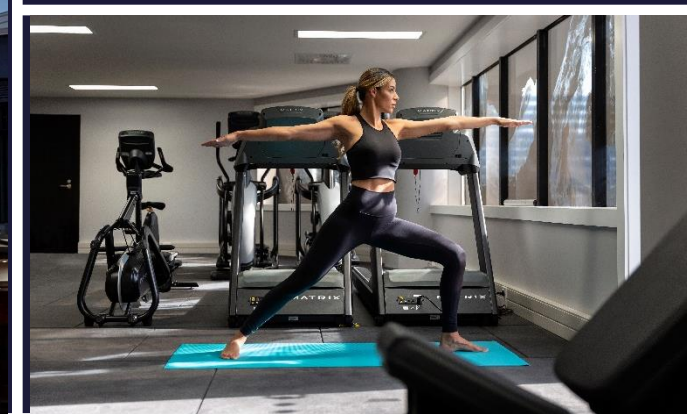
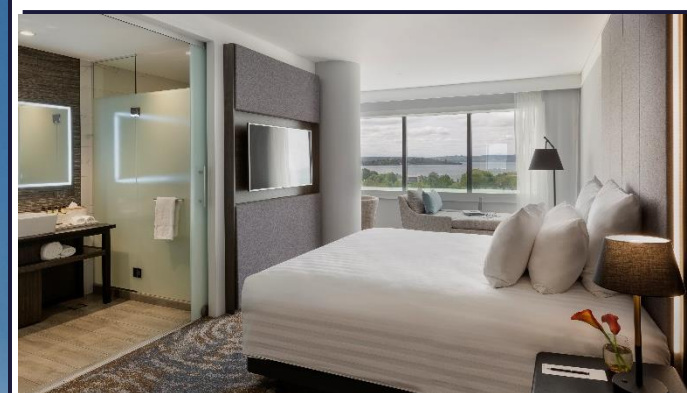
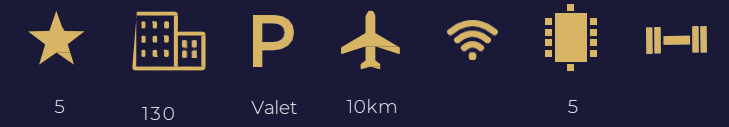


3 hotels \ 3 brands

PULLMAN \ NOVOTEL \ IBIS



Rotorua



Pullman Rotorua

1135 Arawa Road, Rotorua

- Ideally situated near the shores of Lake Rotorua, next to the CBD and restaurants
- Opened Feb 2020 as Rotorua's only 5 star Hotel
- 130 modern and spacious accommodation rooms with lake or city views
- Dedicated conference and meeting facilities
- Executive lounge for deluxe room and suite guests
- Barrel & Co. Bar and Grill, alongside a fully equipped gym onsite



Rotorua



Novotel Rotorua Lakeside

Lake End, Tutanekai Street, Rotorua

- Ideally situated near the shores of Lake Rotorua
- Next to the CBD and restaurant sector
- 199 modern and spacious accommodation rooms with lake or city views.
- Dedicated conference and meeting facilities
- Traditional Maori hangi at Matariki.
- Free geothermal mineral pools as well as a fully equipped gym and heated swimming pool

NOVOTEL

Rotorua



ibis Rotorua

Lake End, Rangiuru Street, Rotorua

- Situated on the shores of Lake Rotorua,
- Centrally located and is easily accessible to cafés, restaurants and local attractions.
- 145 guest rooms
- Restaurant and bar for dining
- Access to conference rooms and other facilities at the adjacent Novotel Rotorua Lakeside.



New Plymouth

Situated on the west coast of New Zealand's North Island in the Taranaki Region, New Plymouth is known for its sunny climate and laid-back atmosphere. Take a stroll along the Coastal Walkway, visit beautiful botanical gardens or enjoy the Govett-Brewster Art Gallery/Len Lye Centre. With so much to see and do within easy walking distance you will be spoilt for choice when it comes to exploring this beautiful coastal city.



1 hotel \ 1 brand

NOVOTEL



New Plymouth



Novotel New Plymouth Taranaki

Cnr. Hobson & Leach Street, New Plymouth

- Stylishly appointed rooms and apartments
- Conveniently located at the North of the city
- Short walk from the main attractions and coastal walkway
- Governors Eatery + Bar
- Conference or wedding of up to 250 guests
- Ample off-street parking options are available

NOVOTEL

Wellington

As New Zealand's colourful and cultural capital, there is so much to see and do in Wellington you'll never want to leave! Trek to the top of magnificent Mount Victoria for stunning views, then catch a cable car up to the beautiful Botanic Gardens. Waterfront shopping at the promenade, great coffee, sophisticated and inventive cuisine, and world-class hotels and theatre productions make a holiday in Wellington an experience to remember.

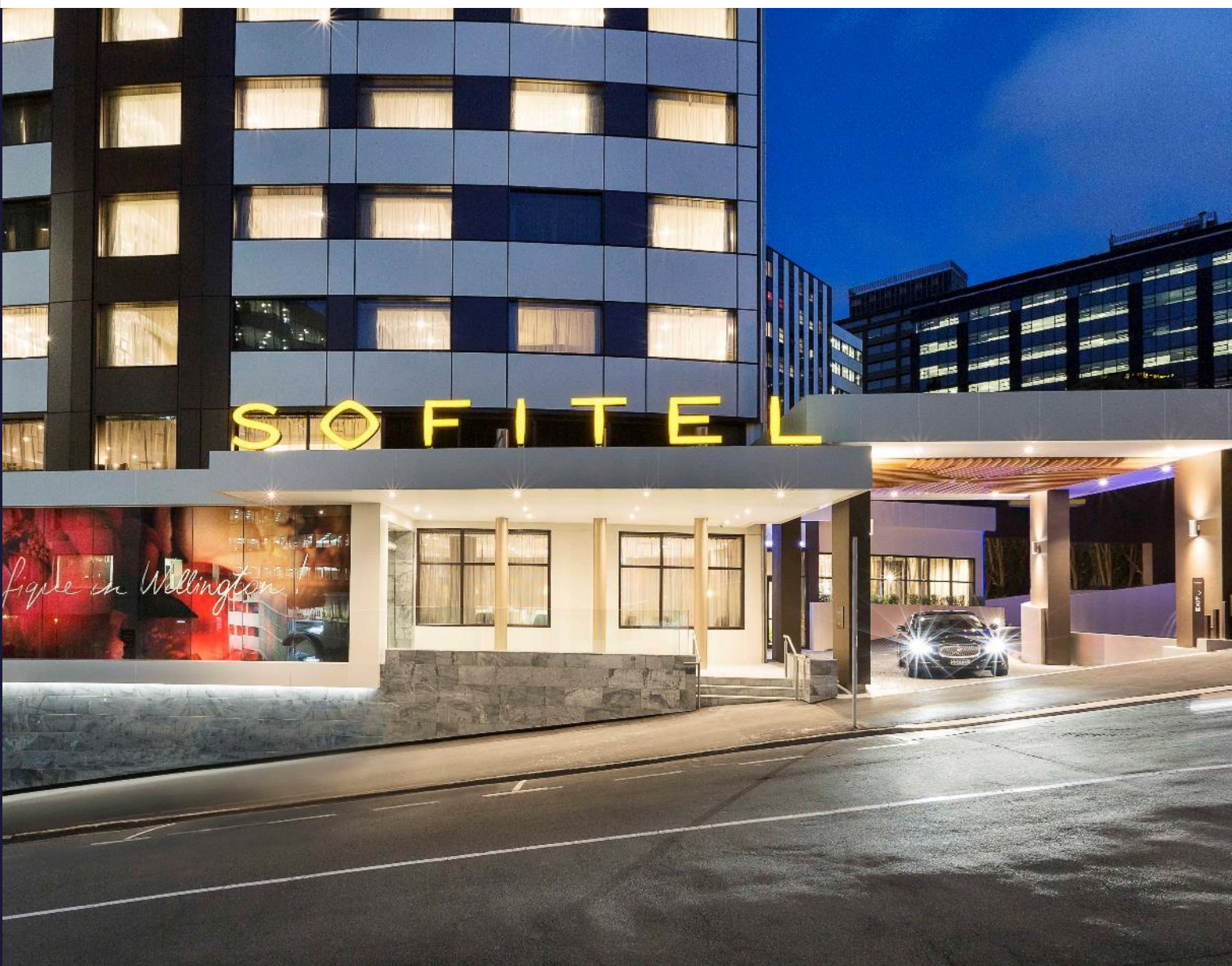


6 hotels \ 5 brands

SOFITEL \ MÖVENPICK \ NOVOTEL \ MERCURE \ IBIS



Wellington



Sofitel Wellington

11 Bolton Street, Wellington

- Ideally positioned in the Central Business District, Parliament, and government hub
- Easy walking distance from major attractions such as the Botanical Gardens, Lambton Quay shopping, waterfront, and the many restaurants and cafés
- Features 129 beautifully appointed guest rooms in vintage gold and bronze tones, including a Prestige Suite and Opera Suite
- Jardin Grill, La Serre Bar, Club SOFITELE, & SoFit Gym
- 3 meeting spaces with natural light including a custom boardroom

S O F I T E L
HOTELS & RESORTS

Wellington



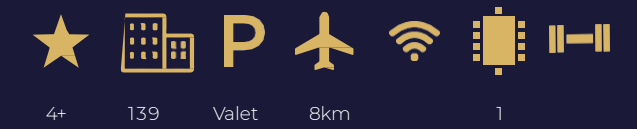
Mövenpick Wellington

345 The Terrace, Wellington

- Overlooking the Cuba Quarter
- 114 guest rooms, including 7 beautifully appointed executive suites
- 8 conference and event spaces featuring natural light and cityscape views
- Forage Kitchen + Bar
- Indoor heated pool, sauna and gym

MÖVENPICK
HOTELS & RESORTS

Wellington



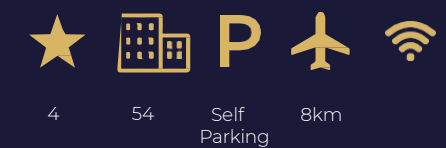
Novotel Wellington

133 The Terrace, Wellington

- Centrally located on The Terrace
- Direct lift access to Lambton Quay
- Only minutes away from the Beehive Parliament, the Cable Car, TSB Bank Arena, Westpac Stadium and the waterfront
- 139 guest rooms
- Caucus Restaurant and Bar
- Guests also have access to the gym, executive boardroom and onsite car parking

NOVOTEL

Wellington



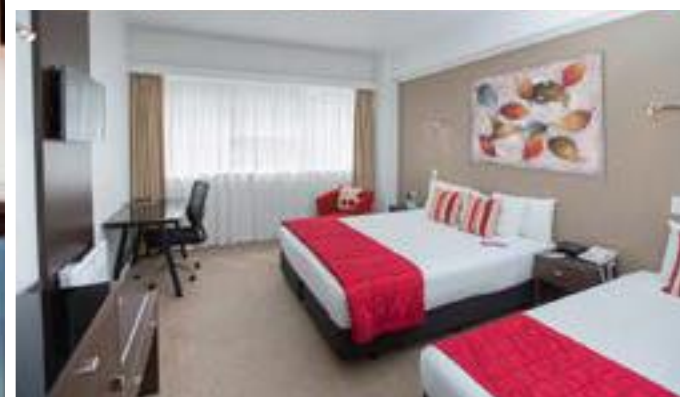
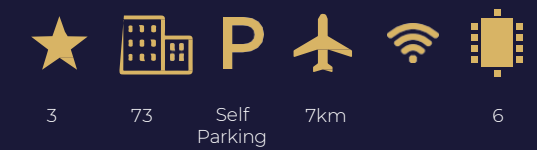
Mercure Wellington Central City Hotel & Apartments

130 Victoria Street, Wellington

- Located in the heart of the city
- Ideal for business and leisure travellers
- Just minutes away from night-life, shopping and many of Wellington's major tourist attractions
- 54 modern rooms with the choice of studio, one bedroom or two bedroom apartments
- High floors of the hotel feature spectacular Wellington and harbour views

MERCURE
HOTELS

Wellington



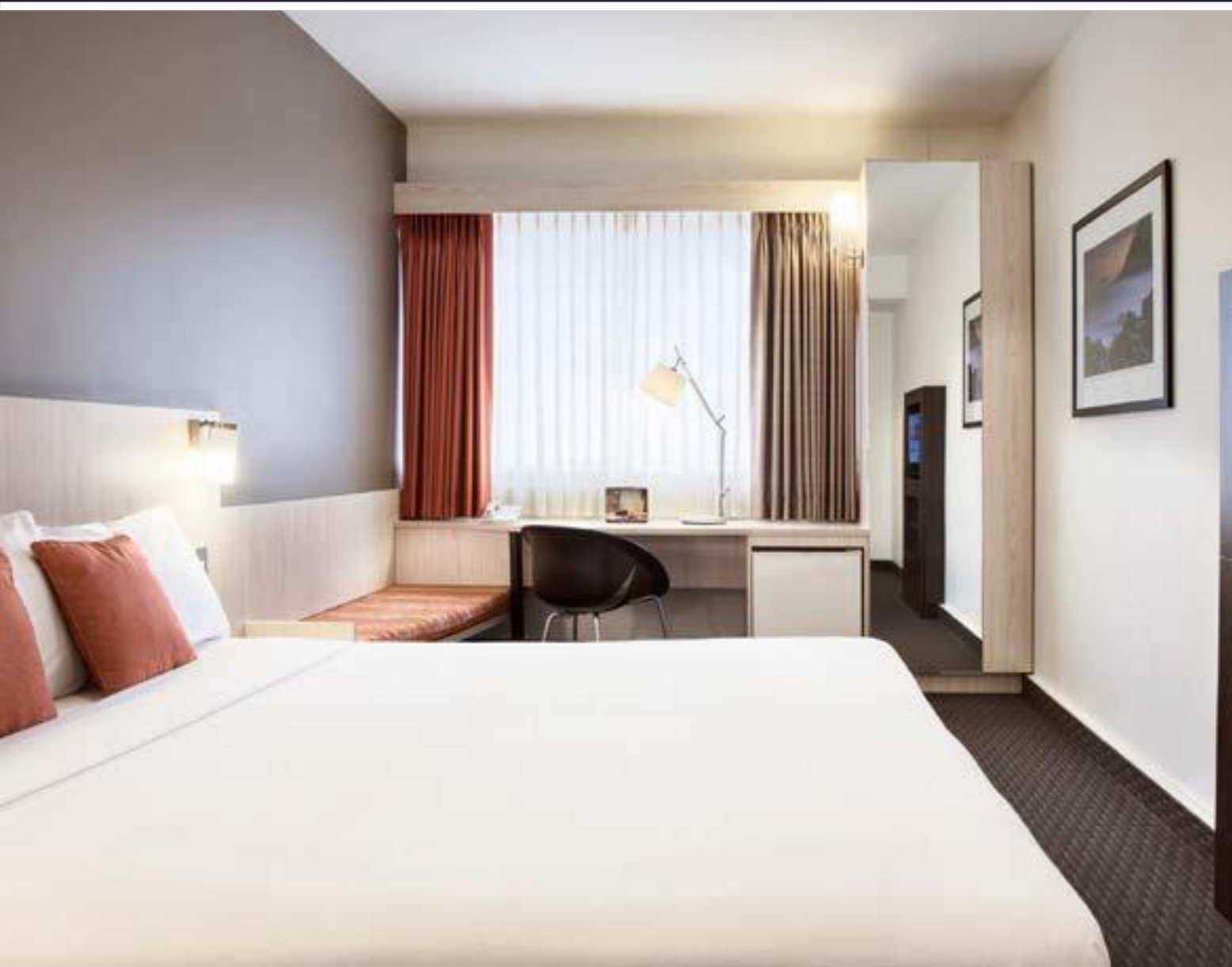
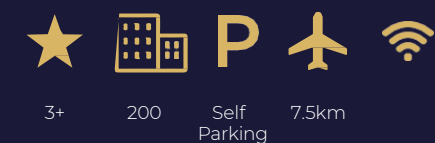
Mercure Wellington Abel Tasman

169 Willis Street, Wellington

- Located between Cuba Street and Victoria University, in the heart of Wellington's business and entertainment districts.
- Close to Museum of New Zealand Te Papa Tongarewa, Parliament buildings & Interislander Ferry Terminal

MERCURE
HOTELS

Wellington



ibis Wellington

53 Featherston Street,
Wellington

- Ideal for both business and leisure travellers
- Located in the heart of the city near Lambton Quay and within easy walking distance to the Beehive Parliament, TSB Arena, Westpac Stadium and Te Papa Museum
- 200 comfortable and contemporary guest rooms
- Vivant! Restaurant and Bar which offers breakfast, lunch and dinner in a casual setting
- Limited secure parking is also available at the hotel



Christchurch

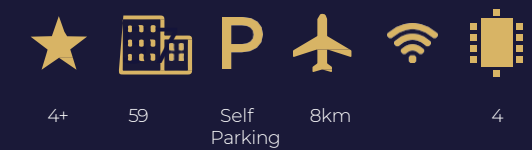
Known as the “Garden City”, Christchurch’s natural splendour is sure to win the affections of even the most discerning traveller. With lush green open spaces, floral and architectural beauty coupled with an exciting downtown precinct, Christchurch offers something special for everyone. Cruise down the gorgeous Avon River, stroll through the beautiful botanical gardens, or ride the scenic, 955 metre high Christchurch Gondola to view all of the city’s charms, as well as the rich surrounds of Lyttelton Harbour and the wider Canterbury Plains.



5 hotels \ 4 brands

PEPPERS \ NOVOTEL \ IBIS \ BREAKFREE

Christchurch



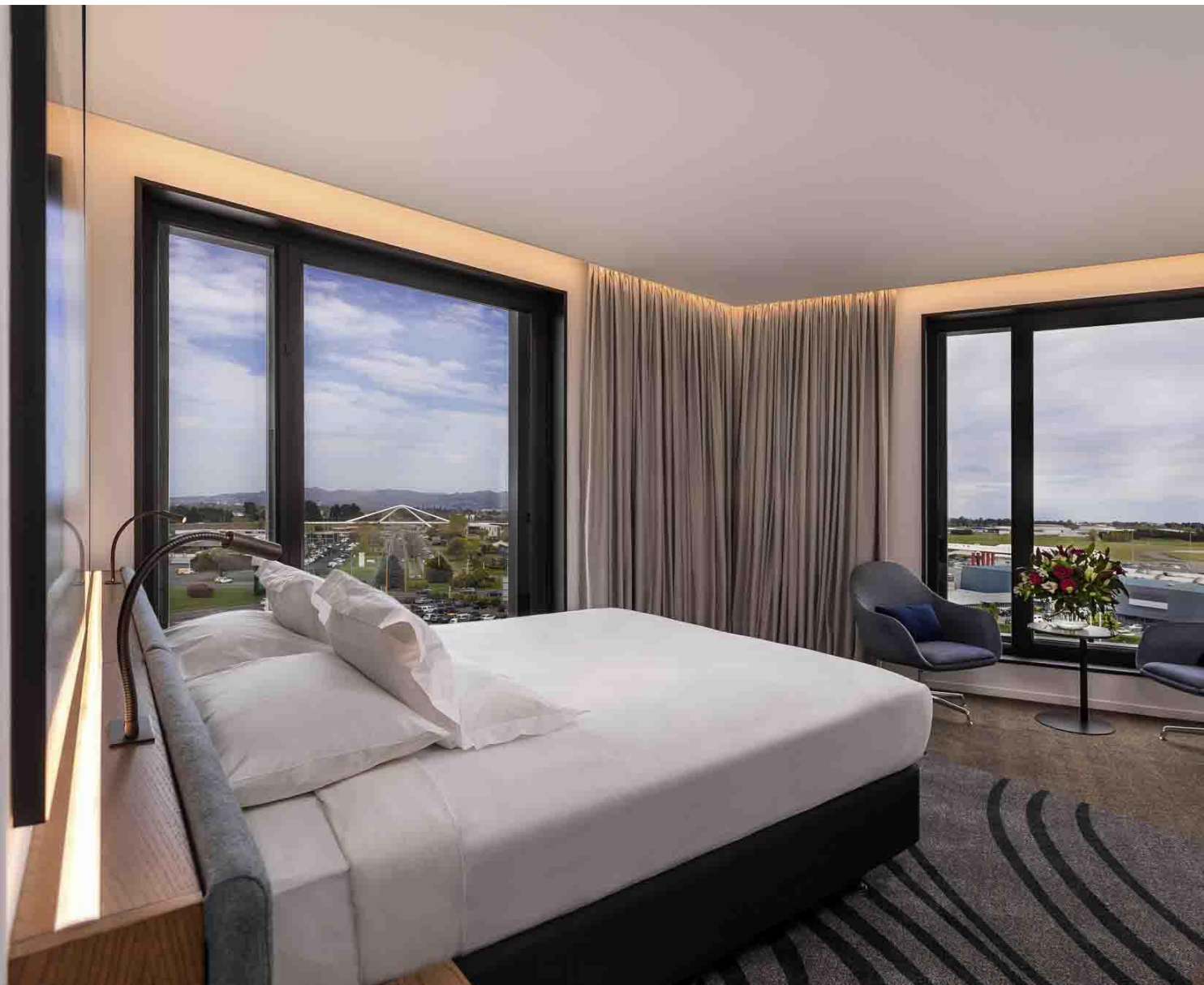
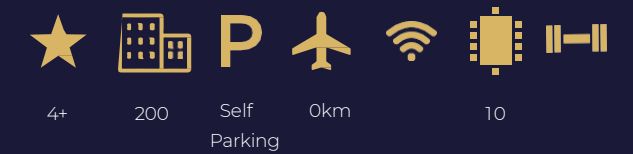
Peppers Clearwater Resort

Clearwater Avenue, Harewood, Christchurch

- Stunning waterfront resort set within a beautiful golf course and surrounded by clear shimmering lakes.
- Lakeside, Lakefront and Garden View Suites, as well as two story Terrace Villas overlooking the lake and golf course.
- Plush furnishings, LCD televisions, wireless internet access, coffee machines, private balconies, tastefully appointed décor and a choice of magnificent vantage points from each room.
- Two all-weather tennis courts available for hire, trout fishing on the iconic lakes and streams near the resort.

PEPPERS

Christchurch



Novotel Christchurch Airport

30 Durey Road, Christchurch Airport

- Conveniently located outside the international and domestic terminals.
- 200 rooms available, designed with modern decor, ergonomic comfort and high end facilities.
- Dine in the Food Exchange or GourmetBar with a selection of balanced meal choices, where you can relax in a friendly and stylish setting.
- Ten high tech, sophisticated function spaces

NOVOTEL

Christchurch



Novotel Christchurch Cathedral Square

50-52 Cathedral Square, Christchurch

- 154 modern and well appointed rooms with the best views over Christchurch city and surrounds
- 2 Suites with separate bedrooms and balcony's
- The hotel offers great dining at The Square Restaurant & Bar
- Fitness centre and flexible meeting and conference facilities for up to 130 delegates
- Located just a short walk from many of the city's emerging areas, such as the new Regent Street art deco shopping precinct and the new Ballantynes department store
- Coach drop off zone at main entrance

NOVOTEL
CHRISTCHURCH
CATHEDRAL SQUARE

Christchurch



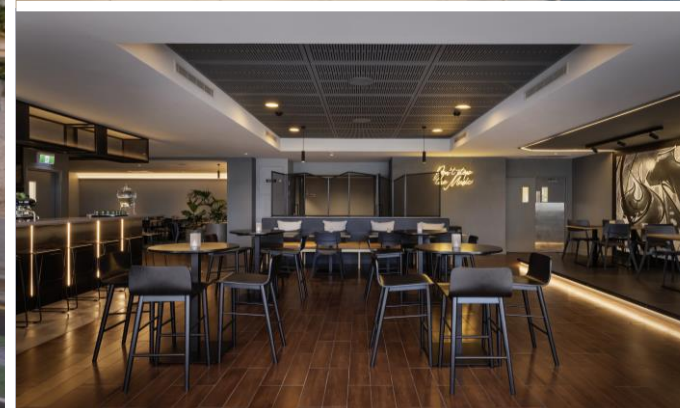
BreakFree on Cashel

165 Cashel Street, Christchurch

- Cutting edge facilities with an ultramodern twist
- Free fibre optic high speed WiFi is available throughout the hotel,
- Stay fit with our small workout room, and if you require services such as in-room massage, childcare, car hire, or dry cleaning our staff can arrange this for you (additional fees apply).
- In-room wake-up calls can also be arranged, and our technology includes the TV turning on which is linked to a camera on the roof of the building so you can see what the weather is like before you head out to enjoy your day.
- If you don't have time to wait in line, you'll find the express checkout a great option.

BreakFree 

Christchurch



ibis Christchurch

107 Hereford Street, Christchurch

- Located adjacent to the BNZ shopping precinct
- 155 contemporary guest rooms
- Newly renovated Perch Dining + Bar open for breakfast and dinner daily
- The hotel is only a few minutes away from the Christchurch Casino and The Terrace, the new hospitality hub
- Easy access to Punting on the Avon, the Museum and the Botanical Gardens



Lake Tekapo

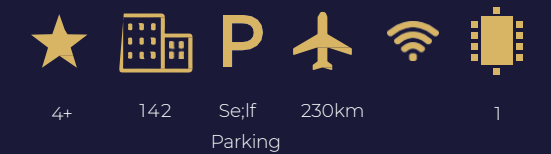
In the centre of the South Island of New Zealand lies Lake Tekapo. This highland lake and settlement is in the heart of the Mackenzie District and surrounded by a vast basin of golden tussock grass. Finely ground rock in the glacial melted waters give Lake Tekapo a beautifully unique turquoise color. Summer or winter, snow-covered or golden-yellow, the surrounding mountains and turquoise lake make a spectacular backdrop for the Church of the Good Shepherd.



2 hotels \ 2 brands

PEPPERS \ MANTRA

Lake Tekapo



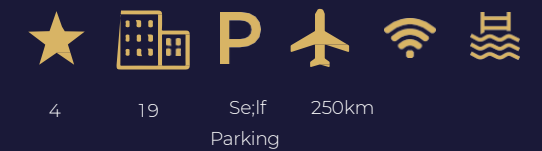
Peppers Bluewater Resort

State Highway 8, Lake Tekapo

- Set near the shores of Lake Tekapo and surrounded by the spectacular landscapes of the Southern Alps.
- Offering hotel rooms, one, two and three bedroom suites and villas are inspired by the regions turquoise hues and earthy tones.
- Suites & Villas feature the addition of stylish kitchens, living and dining areas.
- Rakinui Restaurant & Bar. Showcasing Mackenzie Country's finest cuisine.
- Fishing rods, mountain bikes, remote controlled jet boats for hire.

PEPPERS

Lake Tekapo



Mantra Lake Tekapo

1 Beauchamp Place, Lake Tekapo

- Nestled amongst snow-capped mountains bordering the stunning turquoise lake,
- Offering spacious apartments each featuring large bedrooms, luxury bathrooms with heated floors, spacious open plan living and dining areas with a gas fireplace and French doors opening to a private courtyard,
- Choose to relax by the pool, spa and a paved BBQ relaxation area with an outdoor fireplace, or enjoy a bottle of one of New Zealand's award-winning local wines on your apartment's private terrace.

mantra

Queenstown

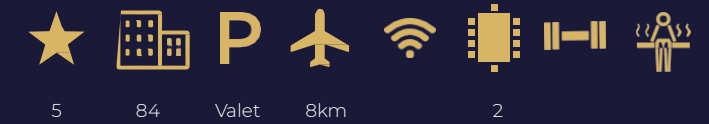
Located on the edge of Lake Wakatipu and looking out at the famous Remarkables Range, Queenstown combines natural beauty with adrenaline fuelled adventure. Magnificent mountain ranges and crystal alpine lakes set the scene for a huge range of adventure activities. Get your heart racing and adrenaline pumping with a bungee jump, jet boat ride, or hang gliding experience, or just soak up the incredible view with an awe-inspiring scenic flight. The town also boasts wonderful wineries, amazing art galleries, sophisticated shopping and challenging championship golf courses.



6 hotels \ 6 brands

SOFITEL \ MGALLERY \ PEPPERS \ NOVOTEL \ MERCURE \ BREAKFREE

Queenstown



Sofitel Queenstown Hotel & Spa

8 Duke Street, Queenstown

- Multi award winning – including NZ Luxury Hotel and Australian Hotel of the Year at the 2023 HM Awards
- Centrally located in the heart of Queenstown with 84 luxuriously appointed bedrooms and suites
- Left Bank Bistro open for breakfast daily, serving a decadent selection of French and locally inspired dishes
- Le Salon Rouge features a carefully curated selection gins from both our local area and abroad, and showcases the very best of local produce prepared by Executive Chef Lindsay Bennett
- Award winning So-Spa featuring 5 serene treatments rooms and a Turkish style Hammam for all guests to enjoy exclusively for 30 minutes

S O F I T E L
HOTELS & RESORTS

Queenstown



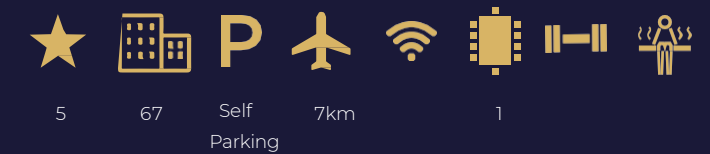
Hotel St Moritz MGallery Hotel Collection

10-18 Brunswick Street, Queenstown

- Idyllically situated in the heart of Queenstown
- Views overlooking Lake Wakatipu and The Remarkables mountain range
- 134 rooms and suites, each handsomely appointed to cleverly blend timeless classics with modern essentials
- Lombardi Restaurant, Bar and Library accompany a gymnasium and hot tub garden
- Two conference rooms which can cater for up to 90 delegates



Queenstown



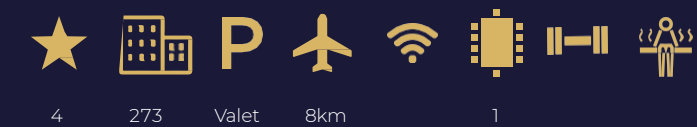
Peppers Beacon

34 Lake Esplanade, Queenstown

- 10 minutes by car from Queenstown Airport and a short stroll from the focal point of Queenstown.
- Four elegant room types inclusive of our hotel rooms, two and three bedroom apartments,
- Spacious two, four and five bedroom penthouses offering a unique outlook of the lake and the Remarkables Mountain Ranges.
- Complimentary WiFi access, a television with Sky Channels (pay TV), tea/espresso making facilities, refrigerator, alarm clock,
- Washing machine, dryers and fireplace is available in some rooms.

PEPPERS

Queenstown



Novotel *Queenstown Lakeside* Cnr. Earl Street & Marine Parade, Queenstown

- 273 rooms and suites with lake, garden and alpine views
- Centrally located a minute's walk from the lively heart of Queenstown, close to shopping, dining and iconic activities
- Restaurant, bar, meeting room, ski storage and on site car parking is also available
- Family Friendly – the perfect base to explore all that Queenstown has to offer

NOVOTEL

Queenstown



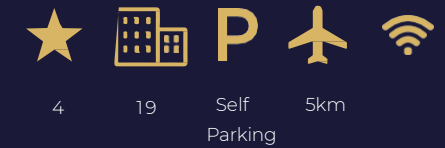
Mercure Queenstown Resort

Sainsbury Road, Fernhill, Queenstown

- Unique vantage point with breathtaking, majestic views over Lake Wakatipu and the Remarkables Mountains
- 148 stylishly appointed guest rooms
- Enjoy atrium views and superb cuisine at Vista Restaurant or relax in the Lounge Bar for coffees, tapas and beverages
- Seasonal swimming pool, spa pool, sauna, gymnasium and sports storage room
- 3 meeting rooms with natural light and views

MERCURE
HOTELS

Queenstown



BreakFree The Point

239 Frankton Road, Queenstown

- Perched on the hillside of Lake Wakatipu , just 1.5 kilometres from the centre of Queenstown.
- Offering spacious studio, 1, 2, 3 and 4 bedroom apartments
- Most accommodation includes views of Lake Wakatipu and apartments have under-floor heating for the cold winters.
- Keep active on our tennis court with lake and mountain views, or relax and drift away on the private lakeside jetty just one minute walk from the resort.
- Onsite guest services include secure undercover parking, in-room internet access, tour desk and express checkout.

BreakFree

Invercargill

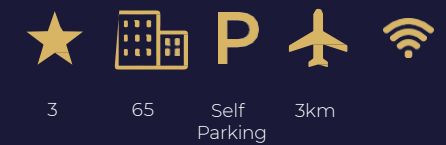
Invercargill sits at the heart of New Zealand's expansive Southland Plains and is one of the southernmost cities in the world. Offering a temperate oceanic climate, it's the perfect place to experience New Zealand's unique life, sights and activities. Take a stroll through the town centre amid lively cafes, restaurants and bars while soaking in the old-world character of Victorian, Edwardian and Art Deco heritage buildings. If you visit at the right time, you might even catch a glimpse of the incredible Aurora Australis Southern Lights, which light up the skies with green and pink displays.



1 hotel \ 1 brand

IBIS STYLES

Invercargill



ibis Styles Invercargill

15 Tay Street, Invercargill

- Located in the heart of Invercargill, a perfect home away from home
- 65 Well-appointed apartments with kitchenettes
- Off-site gym access, in-house movie theatre, games room, pool table, guest lounge
- Secure on-site car park



Thank You



RAFFLES \ ORIENT EXPRESS \ BANYAN TREE \ SOFITEL LEGEND \ FAIRMONT \ EMBLEMS \ SOFITEL \ RIXOS
ONEFINESTAY \ MANTIS \ MGALLERY \ ART SERIES \ PULLMAN \ SWISSÔTEL \ ANGSANA \ MÖVENPICK
GRAND MERCURE \ PEPPERS \ THE SEBEL \ MANTRA \ NOVOTEL \ MERCURE \ ADAGIO \ BREAKFREE \ IBIS
IBIS STYLES \ GREET \ IBIS BUDGET \ HOTELF1

ENNISMORE 21C MUSEUM HOTEL \ 25HOURS \ DELANO \ GLENEAGLES \ HYDE \ JO&JOE \ MAMA SHELTER \ MONDRIAN \ MORGANS ORIGINALS
SLS \ SO \ THE HOXTON \ TRIBE \ WORKING FROM